



Consumer Satisfaction Services, Inc.

**Capital Region
3rd Quarter 2023**

PREPARED FOR:

Capital Area Behavioral Health Collaborative (CABHC)

Prepared By

Consumer Satisfaction Services

4775 Linglestown Road

Suite 201

Harrisburg, PA 17112

(717) 651-1070

www.css-pa.org

Consumer Satisfaction Services, Inc.

Board of Directors

Chair	Steve Barndt
Vice Chair	Traci Schaeffer
Secretary	Deborah Allen
Treasurer	Chris Kroft
Member at Large	Lisa Arifer-Polcha

Staff

Executive Director	Jessica Paul
C/FST Manager	Abby Robinson
Program Assistant	Serina Polizzi
Survey Specialists	Mary Schram
	Debra Helwig
	Glenn Dieffenbach
	Florence Turney

Consumer Satisfaction Services, Inc. (CSS) is a non-profit, tax exempt organization recognized by the Internal Revenue Service under Section 501 (C) (3) of the United States Tax Code.

Table of Contents

Executive Summary	I
Request for Assistance	1
Survey Information	2
Demographic Information.....	3
Consumer Satisfaction.....	5
Total Satisfaction	10
Services	14
Outcomes of Services	18
Satisfaction with the Managed Care Organization.....	21
Consumer Comments	30

Executive Summary

Survey Protocol

Consumer Satisfaction Services (CSS) is a consumer operated, non-profit organization. CSS gives a voice to consumers, by giving them the opportunity to express their opinion of services received as well as their treatment wants and needs. CSS also helps to identify trends and institute change for future consumers. Half of the CSS Board of Directors and all staff are self-identified as being in mental health and/or substance use recovery or identify as a family member.

All Consumer/Family Satisfaction Team (C/FST) surveyors have their criminal background check, child abuse history clearances and confidentiality statements updated on an annual basis and FBI clearances updated every 5 years.

Typically, surveyors are present at the CSS office to schedule face-to-face appointments and occasional telephonic interviews. The surveyors schedule appointments using member names provided by Capital Area Behavioral Health Collaborative. In order to keep staff and respondents safe during the Covid 19 pandemic, CSS surveyed the majority of individuals over the phone rather than visit in person for face-to-face interviews. The transition back to in person surveying continues, however telephone was the preferred method for the majority of this feedback. CSS is always looking for ways to assure goals are met in hopes of gathering more valuable feedback for providers and also in line with the Health Choices Programs Standards and Requirements. We value provider feedback.

The survey consists of 45 questions that cover topics including satisfaction with PerformCare, satisfaction with services being received, and the impact of services on over-all life improvement.

Individuals are given the opportunity to decline a survey and are free to end the survey at any point. They have the option to skip or refuse to answer any question if they choose. The confidentiality of each respondent is protected, and any identifying information will be removed to ensure that protection.

Statistical Analysis

Consumer Satisfaction Services utilizes the data analysis programs SNAP and SPSS. The Mean Satisfaction Score is calculated for each individual based on responses to 28 of the survey questions. These 28 questions focus on satisfaction with services received and the perceived effects (outcomes) of services.

Each question has 5 possible responses that are included in the Mean Satisfaction Score. The responses range from 1 (Strongly Disagree) to 5 (Strongly Agree), this is called a Likert Scale. Higher scores represent higher satisfaction. All of these numbers are combined (added up) and that number is divided by the total number of questions (28) and that is how we calculate the Mean Satisfaction Score or the average score for one respondent. The highest possible score is 140 (5*28) and the lowest possible score is 28 (1*28). The mean scores of each survey are then combined to find the Total Satisfaction Score or the average score based on all responses.

Total Satisfaction Score is compared with other demographic information in an attempt to identify statistically significant differences.

The use of the word 'significant' in this document indicates that the observed differences in the data have been evaluated using appropriate statistical methods with the alpha level set = .05. A significant trend indicates a probability level which approaches significance i.e., the probability level is between .05 and 1.0. Significance at 5% (.05) level means that there is a 95% confidence level that it can be repeated with a different population or that there is a 5% chance that the findings are due to chance.

CSS has set a benchmark for consumer responses in the Services and Outcomes of Services sections of this report. Strongly Agree and Agree scores of 85% or above indicate high satisfaction, and Strongly Disagree and Disagree scores of 15% or above indicate low levels of satisfaction requiring further exploration.

Frequencies may not sum to total (n=164) as individuals may have chosen not to respond to certain questions. Percentages may not sum to 100.0% due to rounding.

Survey Information

- Sample: The survey represents 164 ($n=164$) respondents from the Capital Region including 128 adult consumers (78.0%) and 36 child/adolescent (22.0%) consumers.
- Sample: Of the 128 adult consumers, 124 (96.9%) responded for themselves, and 4 (3.1%) had a parent/guardian respond for them. Of the 36 child/adolescent consumers, 35 (97.2%) had a parent/guardian respond for them, and 1 (2.8%) responded for themselves with the additional input of a parent/guardian.
- Level of Care: In all, 4 treatment levels of care were utilized by respondents and are included in this reporting period, 124 (75.6%) SUD Partial Hospitalization, 26 (15.9%) RTF (Residential Treatment Facility), 10 (6.1%) EIBS, and 4 (2.4%) CRR Host Home.
- Methods: Data was collected by 5 interviewers.
- Treatment Facility: Data was collected pertaining to 20 Treatment Facilities that served members from the Capital Region.
- Type: Overall, of the 164 interviews, 103 (62.8%) were conducted in person and 61 (37.2%) were conducted by phone.

Services

The standard survey has 17 questions that asks respondents about their satisfaction with the services they receive. According to survey responses, individuals report some level of satisfaction with their services.

Respondents reported high levels of satisfaction (85% or greater satisfaction) for the following questions:

- 99.4% Program staff respects your ethnic, cultural, and religious background in your recovery/treatment Q21.
- 97.6% You feel comfortable in asking questions regarding your treatment Q18.
- 96.3% You were informed about your rights and responsibilities regarding the treatment you received Q17.
- 95.7% You trust your service provider Q22.
- 95.7% You are included in the development of your treatment/recovery plan and goals for recovery Q25.
- 95.1% You are an important part of the treatment process Q26.
- 93.9% Your provider asks your permission before sharing your personal information Q20.
- 93.9% You feel safe at this facility Q23.
- 92.7% Overall, you are satisfied with the services received/are receiving Q29.
- 90.9% Your service provider spends adequate time with you Q19.
- 90.2% Your service provider explained the advantages of therapy or treatment Q27.
- 88.4% Your service provider explained the limitations of therapy or treatment Q28.

- 87.8% Your service provider offered you the opportunity to involve family, significant others, or friends into your treatment process Q24.

Outcomes of Services

The standard survey asks respondents 11 questions about how much they feel their life has improved based on receiving services.

Respondents describe their lives as being better as a result of their services in the majority of cases. In total, 72.0% to 87.2% of individuals' responses reflect services have improved their lives in each outcome area. Additionally, 11.0% to 20.7% of responses reflect that no change has resulted from involvement in services. Finally, 0.6% to 5.5% of responses reflect things are worse as a result of services.

**Participating with school or work activities Q38. A high number of respondents reported that this question did not apply to them. With these cases removed, 80.0% reported that participating with school or work is better or much better, 17.5% reported no change, and 2.5% reported this as worse or much worse. This is a more accurate representation of the data.*

**Being involved in community activities Q37. A high number of respondents reported that this question did not apply to them. With these cases removed, 68.6% reported that being involved in community events is better or much better, 27.7% reported no change, and 3.6% reported this as worse or much worse. This is a more accurate representation of the data.*

We welcome questions, comments and suggestions. Please contact:

**Abby Robinson
C/FST Manager
4775 Linglestown Road
Harrisburg PA, 17112
(717) 651-1070**

Request for Assistance

During the interview, if a respondent indicates they are unhappy about something with their provider (based on the service and provider that is the focus of the survey), PerformCare or any other part of the behavioral health system that can reasonably be addressed, the surveyor will ask the individual if they would like for the surveyor/CSS to communicate this concern to the party they have a concern with. This is known as the Request for Assistance (RFA). A completed Request for Assistance is forwarded to Capital Area Behavioral Health Collaborative (CABHC) for action steps and follow up.

- CSS had no Requests for Assistance for the 3rd Quarter 2023.

* If at any point during the survey a respondent reports an event or situation where they felt that they were mistreated by their provider, CSS automatically offers to conduct a Request for Assistance. If the individual declines the RFA, CSS records the event, and it is reported in the provider specific report within the comments.

Survey Information

- **Sample:** The survey represents 164 ($n=164$) respondents from the Capital Region including 128 adult consumers (78.0%) and 36 child/adolescent (22.0%) consumers.
- **Sample:** Of the 128 adult consumers, 124 (96.9%) responded for themselves, and 4 (3.1%) had a parent/guardian respond for them. Of the 36 child/adolescent consumers, 35 (97.2%) had a parent/guardian respond for them, and 1 (2.8%) responded for themselves with the additional input of a parent/guardian.
- **Level of Care:** In all, 4 treatment levels of care were utilized by respondents and are included in this reporting period, 124 (75.6%) SUD Partial Hospitalization, 26 (15.9%) RTF (Residential Treatment Facility), 10 (6.1%) EIBS, and 4 (2.4%) CRR Host Home.
- **Methods:** Data was collected by 5 interviewers.
- **Treatment Facility:** Data was collected pertaining to 20 Treatment Facilities that served members from the Capital Region.
- **Type:** Overall, of the 164 interviews, 103 (62.8%) were conducted in person and 61 (37.2%) were conducted by phone.

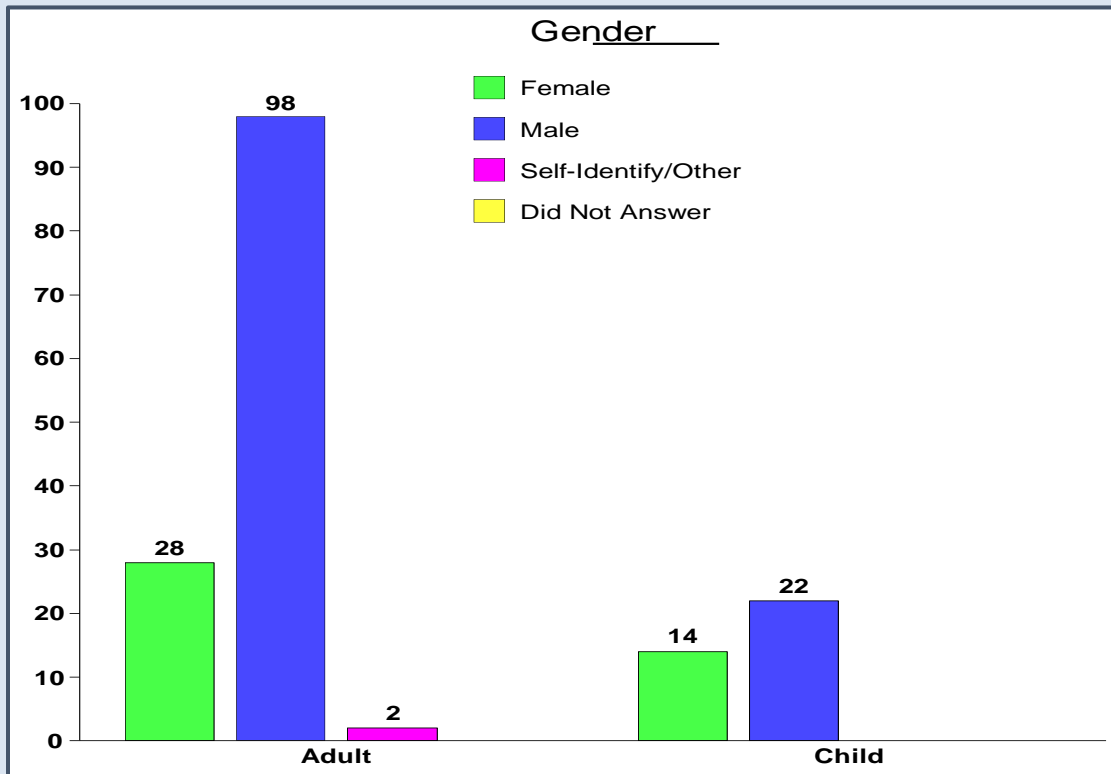
County of Residence:

The table below shows the respondent's county of residence in alphabetical order. The largest number of respondents reported residence in Lancaster (59.8%). The remaining respondents reported residence in Cumberland (21.3%), Dauphin (13.4%), Lebanon (3.7%), and Perry County (1.8%).

	Total	County				
		Cumberland	Dauphin	Lancaster	Lebanon	Perry
Total	164	35 21.30%	22 13.40%	98 59.80%	6 3.70%	3 1.80%
Age Type						
Adult	128	28 21.90%	19 14.80%	77 60.20%	4 3.10%	0 0
Child	36	7 19.40%	3 8.30%	21 58.30%	2 5.60%	3 8.30%

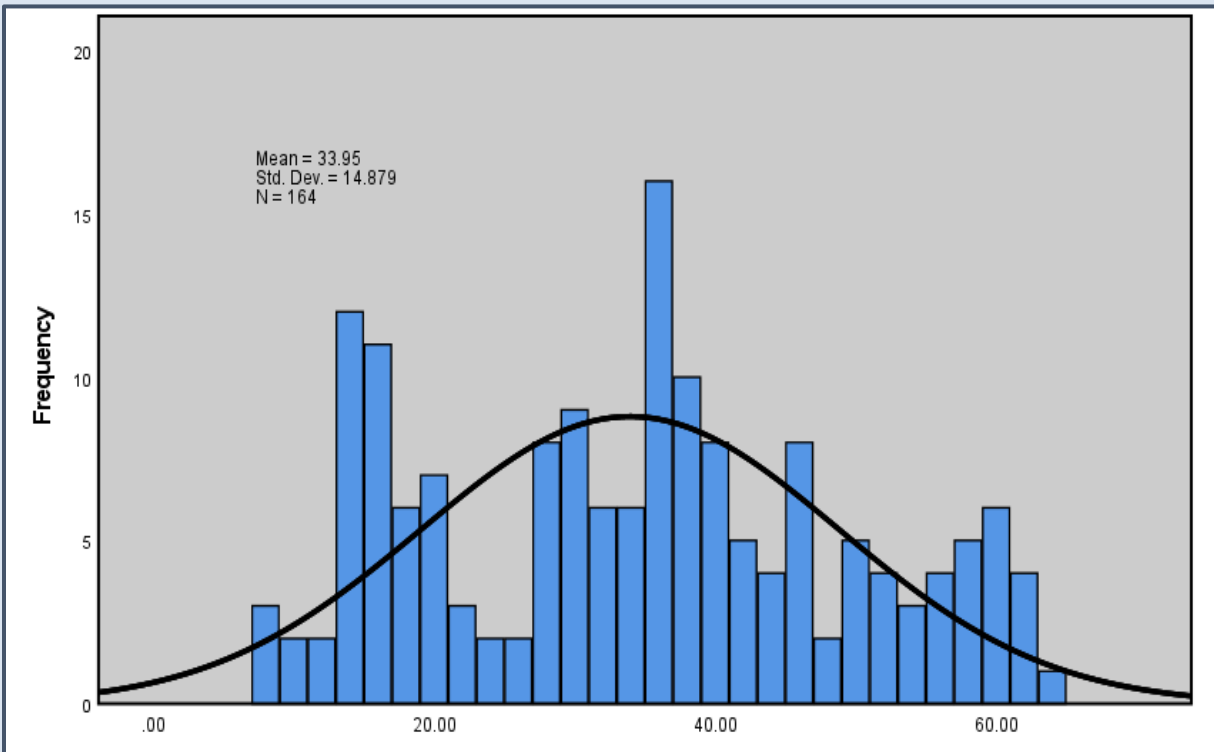
Demographic Information

Gender: Overall, the sample is 25.6% Female (42), 73.2% Male (120), and 1.2% Self-Identify Other (2).



Age: Age of all respondents ranged from 8-64 years, with a mean age of 33.95 (SD 14.879).

Age of All Respondents



Race: 108 respondents (65.9%) reported their race as White/Caucasian, 29 (17.7%) as African American, 12 (7.3%) as Multi-Racial, 10 (6.1%) as Hispanic/Latino, 3 (1.8%) as Native American/American Indian, and 2 (1.2%) as Other.

	Total	Race							
		African American	Asian/Pacific Islander	Hispanic/Latino	Native American/American Indian	White/Caucasian	Multi-Racial	Other	Did Not Answer
Total	164	29 17.70%	0 0	10 6.10%	3 1.80%	108 65.90%	12 7.30%	2 1.20%	0 0
Age Type									
Adult	128	27 21.10%	0 0	8 6.30%	3 2.30%	81 63.30%	7 5.50%	2 1.60%	0 0
Child	36	2 5.60%	0 0	2 5.60%	0 0	27 75.00%	5 13.90%	0 0	0 0

Consumer Satisfaction

This section of the report looks at different dimensions of consumer satisfaction with services and also reports on any statistically significant differences in total satisfaction. Satisfaction scores are calculated using a mean score.

Each question has 5 possible responses that are included in the Mean Satisfaction Score. The responses range from 1 (Strongly Disagree/Much Worse) to 5 (Strongly Agree/Much Better), this is called a Likert Scale. Higher scores represent higher satisfaction. All of these numbers are combined (added up) and that number is divided by the total number of questions (28) and that is how we calculate the Mean Satisfaction Score or the average score for one respondent. The highest possible score is 140 (5*28) and the lowest possible score is 28 (1*28). The mean scores of each survey are then combined to find the Total Satisfaction Score or the average score based on all responses.

Total Satisfaction Score is compared with other demographic information in an attempt to identify statistically significant differences.

The use of the word 'significant' in this document indicates that the observed differences in the data have been evaluated using appropriate statistical methods with the alpha level set = .05. A significant trend indicates a probability level which approaches significance i.e., the probability level is between .05 and 1.0. Significance at 5% (.05) level means that there is a 95% confidence level that it can be repeated with a different population or that there is a 5% chance that the findings are due to chance.

This section includes questions involving provider satisfaction surveys, service delays, and emergency treatment.

Survey Information: Overall, 70 of the 164 respondents (42.7%) reported they had been interviewed by their provider within the last year, 82 (50.0%) reported they had not been interviewed, 10 (6.1%) were not sure, and 2 (1.2%) reported that this question did not apply.

	Total	Has your provider interviewed you on your satisfaction level with services during the last year?			
		Yes	No	Not sure	N/A
Total	164	70 42.70%	82 50.00%	10 6.10%	2 1.20%
Age Type					
Adult	128	60 46.90%	62 48.40%	5 3.90%	1 0.80%
Child	36	10 27.80%	20 55.60%	5 13.90%	1 2.80%

Service Delay: Of the 164 respondents, 23 (14.0%) reported that they experienced some delay before beginning treatment. 140 respondents (85.4%) reported no delay before beginning treatment, and 1 (0.6%) reported that this question did not apply to them.

	Total	Q11 Were there delays before starting these services?		
		Yes	No	N/A
Total	164	23 14.00%	140 85.40%	1 0.60%
Age Type				
Adult	128	7 5.50%	120 93.80%	1 0.80%
Child	36	16 44.40%	20 55.60%	0 0

Emergency Treatment: 36 of the 164 respondents (22.0%) indicated they needed emergency mental health or substance use service during the past year, 127 respondents (77.4%) reported that they did not need emergency service, and 1 respondent (0.6%) was unsure.

- Satisfaction with emergency services was rated on a 5 point scale from 1 (Not at All) to 5 (Very Satisfied). The mean rating of satisfaction was 4.08 with a standard deviation of 1.079.

	Total	Q42a If yes, how satisfied are you with the help you received?					
		Not At All	Somewhat	Neither	Satisfied	Very Satisfied	Does Not Apply
Total	36	2 5.60%	2 5.60%	1 2.80%	17 47.20%	14 38.90%	0 0
Age Type							
Adult	29	2 6.90%	2 6.90%	1 3.40%	14 48.30%	10 34.50%	0 0
Child	7	0 0	0 0	0 0	3 42.90%	4 57.10%	0 0

Mean Satisfaction of Treatment Facilities

- Data was collected from 20 Treatment Providers in the Capital Region. The distribution of respondents is presented below. Mean Satisfaction scores are listed separately for Adult and Child/Adolescent Services for each facility. To help with interpretation, scores highlighted in **Green** (113-140) indicate a high level of satisfaction, scores highlighted in **Yellow** (85-112) indicate some level of satisfaction and scores highlighted in **Red** (below 84) indicate some level of dissatisfaction.

Total Satisfaction Score			
Name of Treatment Facility	N	Mean	Std. Deviation
WDR YORK - PARTIAL	3	121.71	6.51
NEW INSIGHTS II	27	121.08	10.44
PRESSLEY RIDGE SCHOOLS	1	120.00	.
PYRAMID HEALTHCARE HARRISBURG (MAZZITTI AND SULLIVAN)	6	119.35	11.12
HOFFMAN HOMES-RTF	4	119.04	15.55
BLUEPRINTS FOR ADDICTION RECOVERY	81	118.18	12.25
DEVEREUX FOUNDATION	1	118.00	.
COMMUNITY SERVICES GROUP INC	1	118.00	.
GATEHOUSE FOR MEN AND WOMEN	2	117.50	7.78
COVE FORGE	5	117.42	5.97
THE BRADLEY CENTER NORTH	5	114.40	5.18
PERSEUS HOUSE INC	1	113.95	.
THE VISTA FOUNDATION E I B S PROGRAM	10	113.24	13.79
SILVER SPRINGS MARTIN LUTHER-RTF	8	112.02	7.30
CHILDRENS HOME OF YORK, INC	1	110.00	.
CHOR YOUTH & FAMILY SERVICES INC	1	106.00	.
MERAKEY CAPITAL	2	105.50	10.61
HARBORCREEK YOUTH SERVICES-ST JOSEPH HOUSE	2	97.50	23.33
SOUTHWOOD PSYCHIATRIC HOSPITAL	2	96.43	20.61
DIVERSIFIED TREATMENT ALTERNATIVE CENTERS LLC	1	74.90	.
Total	164	116.96	12.29

Adult			
Total Satisfaction Score			
Name of Treatment Facility	N	Mean	Std. Deviation
WDR YORK - PARTIAL	3	121.71	6.51
NEW INSIGHTS II	27	121.08	10.44
THE VISTA FOUNDATION E I B S PROGRAM	4	119.58	13.29
PYRAMID HEALTHCARE HARRISBURG (MAZZITTI AND SULLIVAN)	6	119.35	11.12
BLUEPRINTS FOR ADDICTION RECOVERY	81	118.18	12.25
GATEHOUSE FOR MEN AND WOMEN	2	117.50	7.78
COVE FORGE	5	117.42	5.97
Total	128	118.94	11.40

Child/Adolescent			
Total Satisfaction Score			
Name of Treatment Facility	N	Mean	Std. Deviation
PRESSLEY RIDGE SCHOOLS	1	120.00	.
HOFFMAN HOMES-RTF	4	119.04	15.55
DEVEREUX FOUNDATION	1	118.00	.
COMMUNITY SERVICES GROUP INC	1	118.00	.
THE BRADLEY CENTER NORTH	5	114.40	5.18
PERSEUS HOUSE INC	1	113.95	.
SILVER SPRINGS MARTIN LUTHER-RTF	8	112.02	7.30
CHILDRENS HOME OF YORK, INC	1	110.00	.
THE VISTA FOUNDATION E I B S PROGRAM	6	109.00	13.51
CHOR YOUTH & FAMILY SERVICES INC	1	106.00	.
MERAKEY CAPITAL	2	105.50	10.61
HARBORCREEK YOUTH SERVICES-ST JOSEPH HOUSE	2	97.50	23.33
SOUTHWOOD PSYCHIATRIC HOSPITAL	2	96.43	20.61
DIVERSIFIED TREATMENT ALTERNATIVE CENTERS LLC	1	74.90	.
Total	36	109.95	12.96

Mean Satisfaction Level of Care

Total Satisfaction Score			
Level of Care	N	Mean	Std. Deviation
SUD PARTIAL HOSPITALIZATION	124	118.91	11.39
EIBS	10	113.24	13.79
CRR-Host Home	4	112.25	9.95
RTF (Residential Treatment Facility)	26	109.81	13.62
Total	164	116.96	12.29

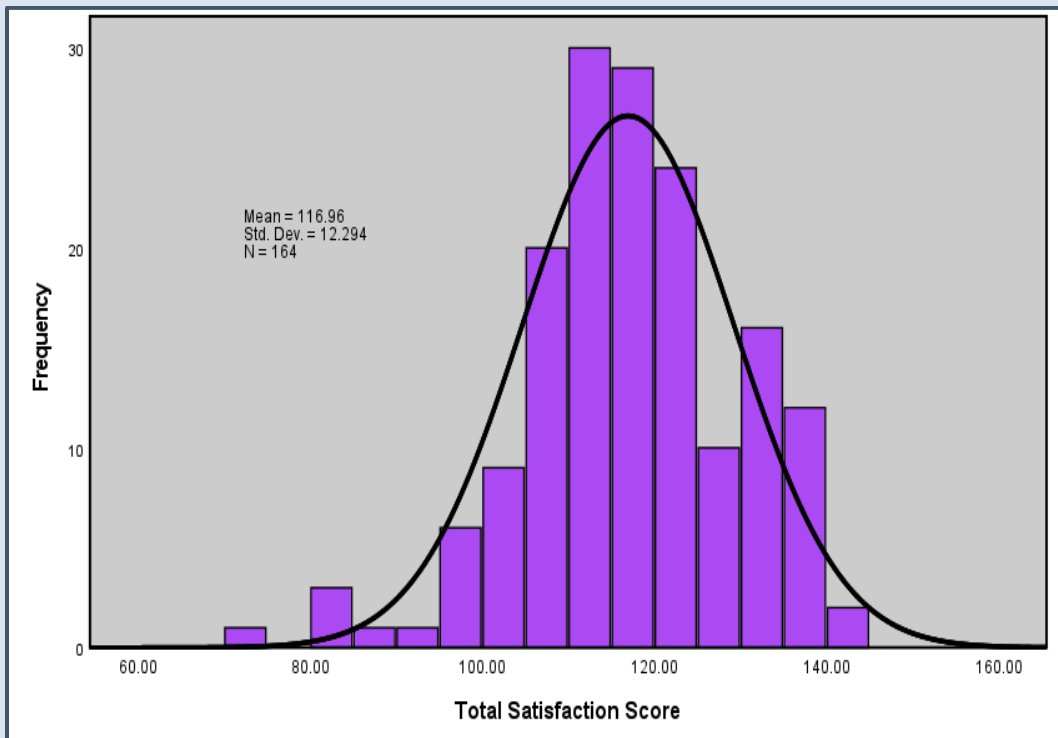
Adult			
Total Satisfaction Score			
Level of Care	N	Mean	Std. Deviation
EIBS	4	119.58	13.29
PARTIAL HOSPITALIZATION	124	118.91	11.39
Total	128	118.94	11.40

Child/Adolescent			
Total Satisfaction Score			
Level of Care	N	Mean	Std. Deviation
CRR-Host Home	4	112.25	9.95
RTF (Residential Treatment Facility)	26	109.81	13.62
EIBS	6	109.00	13.51
Total	36	109.95	12.96

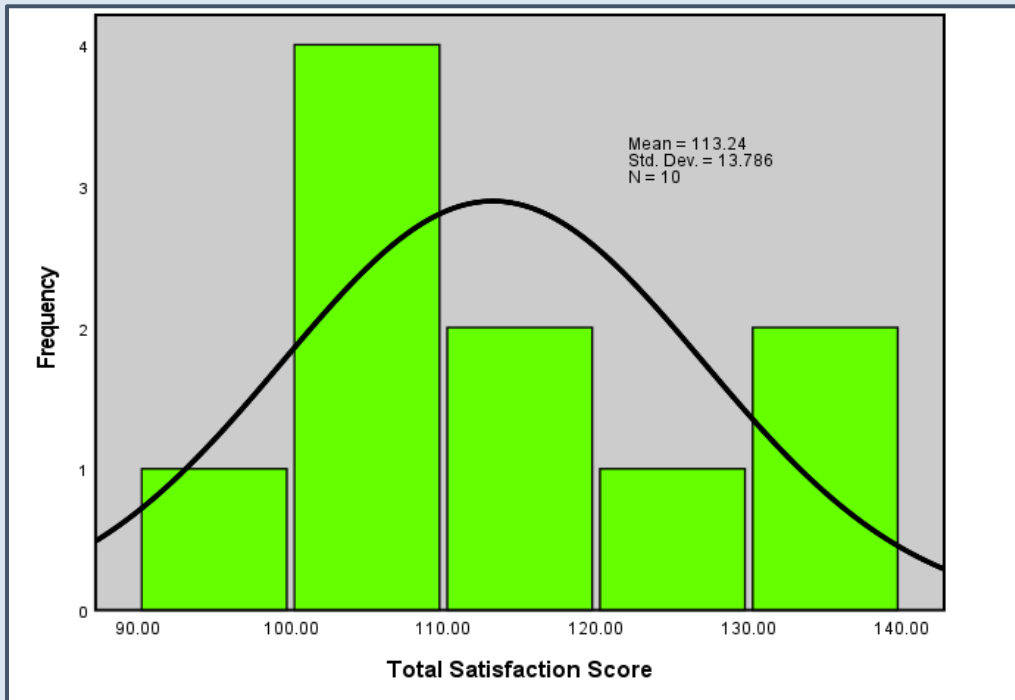
Total Satisfaction

Overall Satisfaction: CSS includes 28 questions in the Total Satisfaction Score (TSS). These are questions 13-40 on the standard survey. Each question has 5 possible responses that are figured into the score. The responses ranged from 1 (Strongly Disagree/Much Worse) to 5 (Strongly Agree/Much Better). Higher scores on questions represent higher satisfaction. The scale has a range of 28-140. Scores 113-140 indicate a high level of satisfaction, scores 85-112 indicate some level of satisfaction and scores below 84 indicate some level of dissatisfaction.

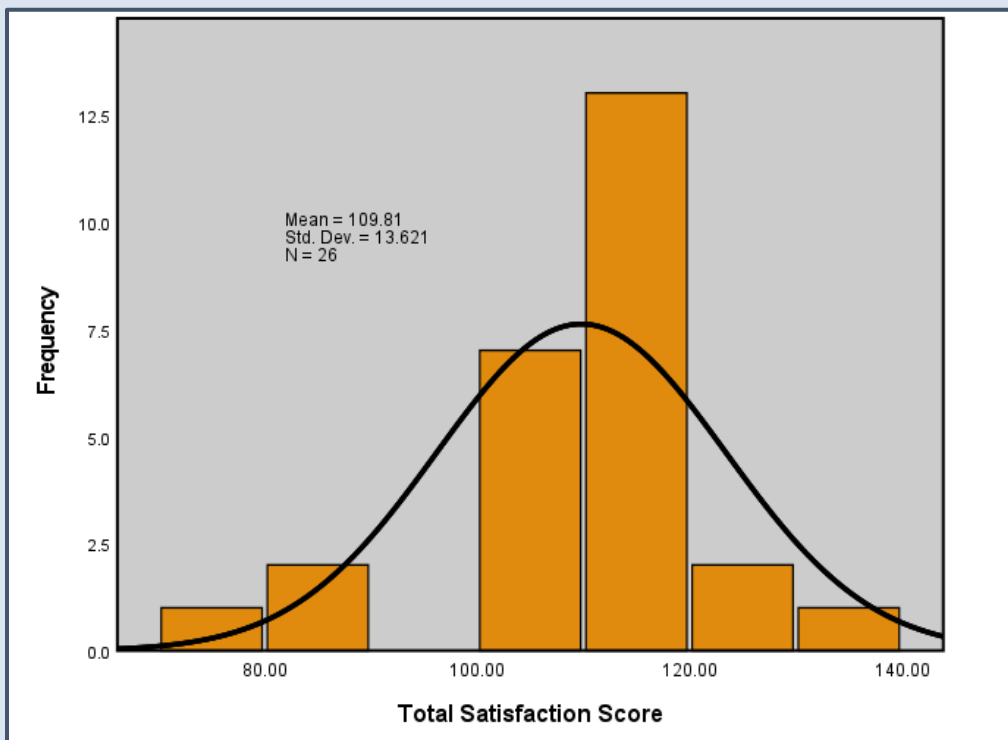
- The overall mean for all respondents for Total Satisfaction Score (TSS) was 116.96 with a standard deviation of 14.15 indicating a high level of satisfaction. The TSS scores ranged from 74.9–140.0. As can be seen in the histogram below, the distribution of TSS is concentrated in the positive direction.



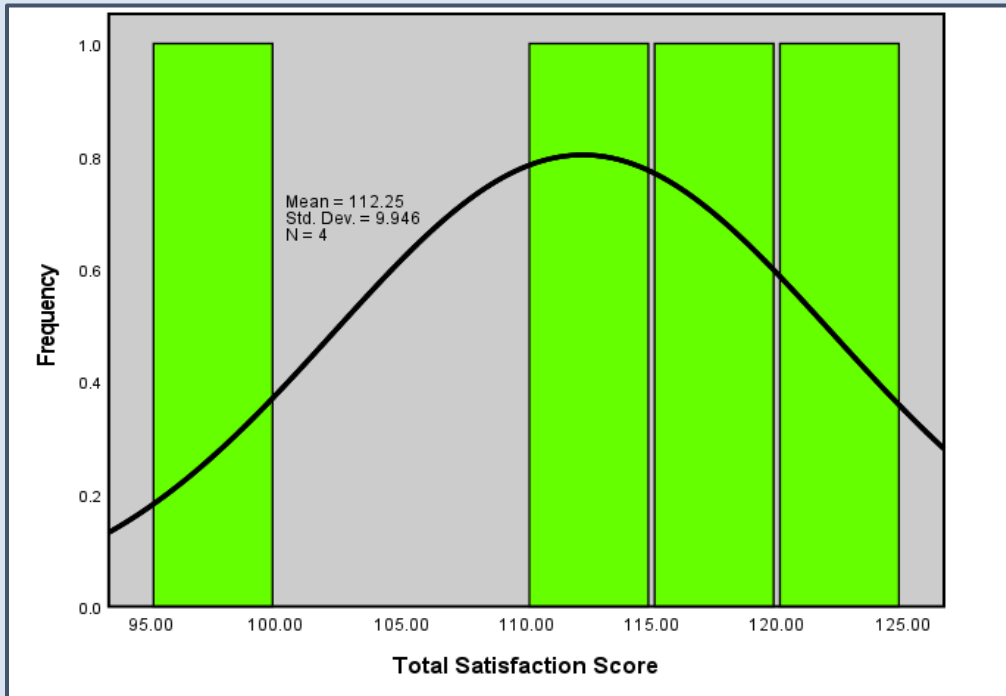
- The overall mean for all EIBS respondents for Total Satisfaction Score (TSS) was 113.24 with a standard deviation of 13.786 indicating a high level of satisfaction. The TSS scores ranged from 94.0–133.9. As can be seen in the histogram below, the distribution of TSS is concentrated in the positive direction.



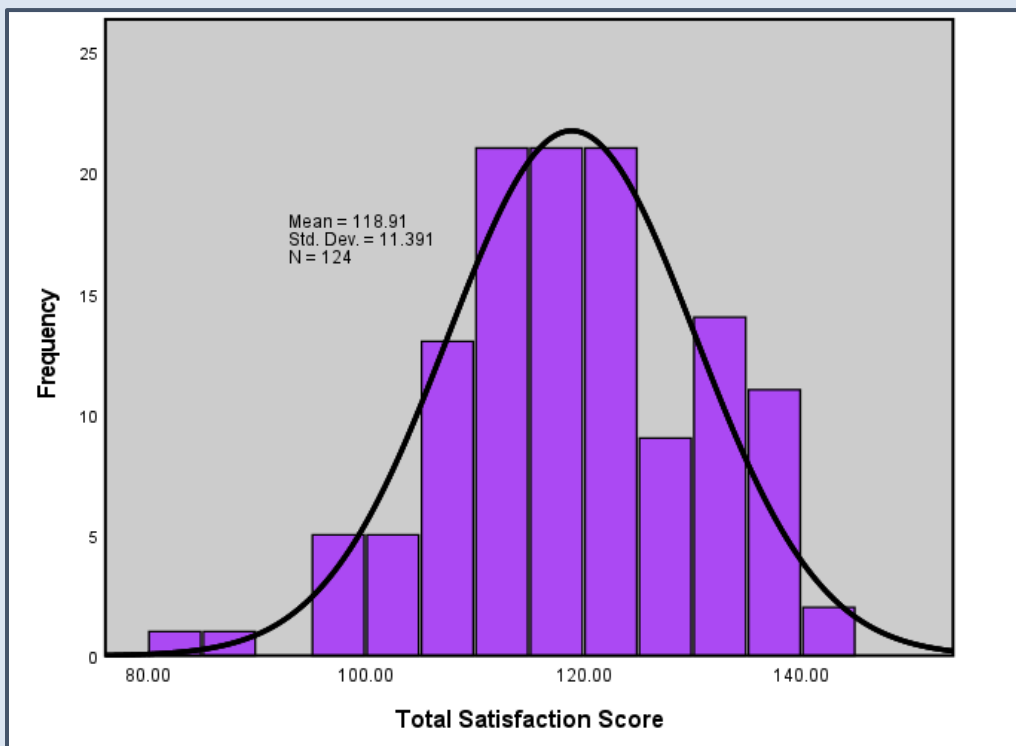
- The overall mean for RTF (Residential Treatment Facility) respondents for Total Satisfaction Score (TSS) was 109.81 with a standard deviation of 13.621 indicating some level of satisfaction. The TSS scores ranged from 74.9–139.0. As can be seen in the histogram below, the distribution of TSS is concentrated in the positive direction.



- The overall mean for all CRR Host Home respondents for Total Satisfaction Score (TSS) was 112.25 with a standard deviation of 9.946 indicating some level of satisfaction. The TSS scores ranged from 98.0–120.0. As can be seen in the histogram below, the distribution of TSS is concentrated in the positive direction.



- The overall mean for all SUD Partial Hospitalization respondents for Total Satisfaction Score (TSS) was 118.91 with a standard deviation of 11.391 indicating a high level of satisfaction. The TSS scores ranged from 84.1–140.0. As can be seen in the histogram below, the distribution of TSS is concentrated in the positive direction.

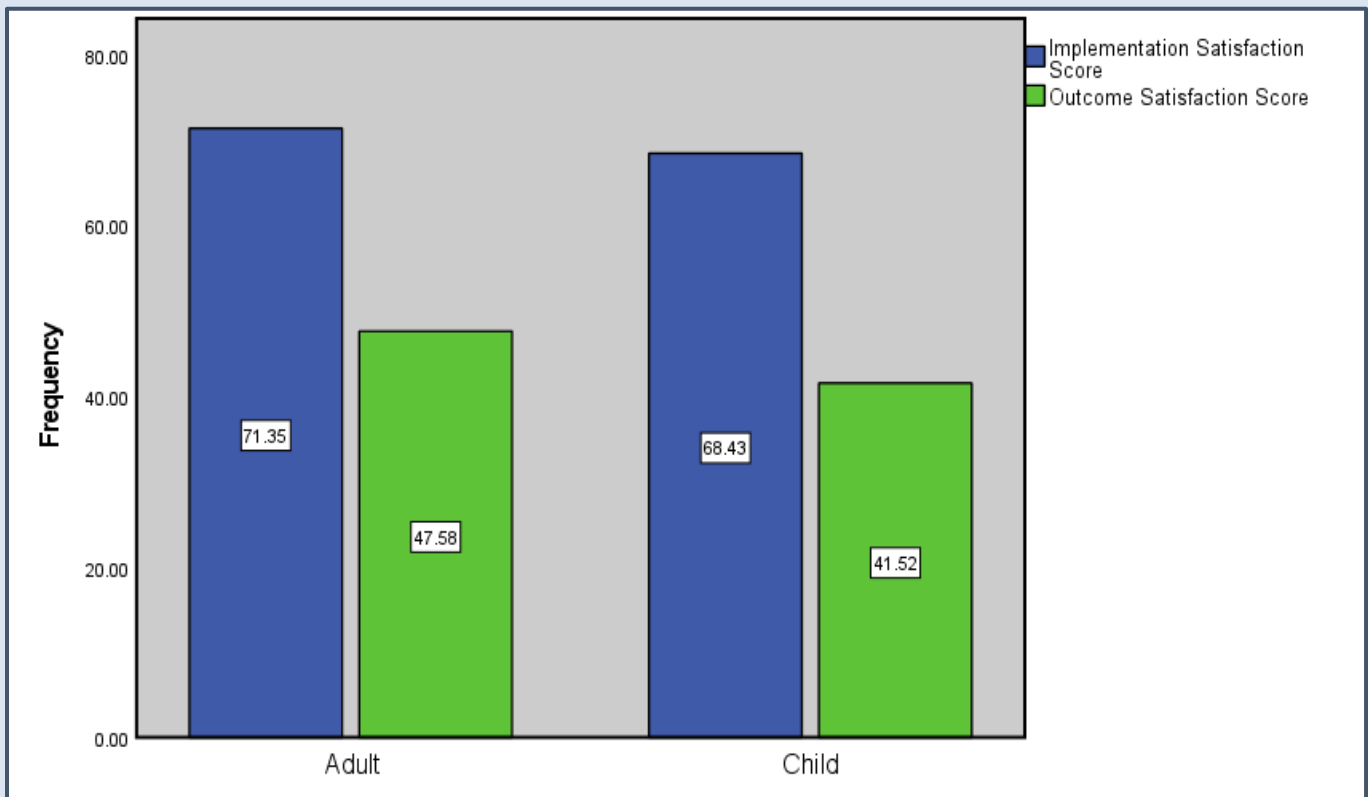


Mean Satisfaction with Services and Outcomes of Services

To help with interpretation, services scores ranged from 17-85. Scores 68-85 indicate a high level of satisfaction, scores 51-67 indicate some level of satisfaction and scores below 50 indicate some level of dissatisfaction with services.

Outcomes of services scores ranged from 11-55. Scores 44-55 indicate a high level of satisfaction, scores 33-43 indicate some level of satisfaction and scores below 33 indicate some level of dissatisfaction with outcomes of services.

To try to understand what aspects of service were influencing satisfaction, the set of satisfaction items were sorted into items relating to services and items relating to outcome of services. The mean levels of satisfaction on these two sub-scales are presented below for reference.



Services

The standard survey has 17 questions that asks respondents about their satisfaction with the services they receive. According to survey responses, individuals report some level of satisfaction with their services.

Respondents reported high levels of satisfaction (85% or greater satisfaction) for the following questions:

- 99.4% Program staff respects your ethnic, cultural, and religious background in your recovery/treatment Q21.
- 97.6% You feel comfortable in asking questions regarding your treatment Q18.
- 96.3% You were informed about your rights and responsibilities regarding the treatment you received Q17.
- 95.7% You trust your service provider Q22.
- 95.7% You are included in the development of your treatment/recovery plan and goals for recovery Q25.
- 95.1% You are an important part of the treatment process Q26.
- 93.9% Your provider asks your permission before sharing your personal information Q20.
- 93.9% You feel safe at this facility Q23.
- 92.7% Overall, you are satisfied with the services received/are receiving Q29.
- 90.9% Your service provider spends adequate time with you Q19.
- 90.2% Your service provider explained the advantages of therapy or treatment Q27.
- 88.4% Your service provider explained the limitations of therapy or treatment Q28.
- 87.8% Your service provider offered you the opportunity to involve family, significant others, or friends into your treatment process Q24.

Summary responses from the Total group of respondents (N=164) are presented in Table 1.

Summary responses from the Adult group of respondents (N=128) are presented in Table 2.

Summary responses from the Child/Adolescent group of respondents (N=36) are presented in Table 3.

Table 1 – Total Satisfaction – Services Questions – All Respondents

N=164	Agree or Strongly Agree	Disagree or Strongly Disagree	Mean	Std. Deviation	Reported Does Not Apply
13. Your provider informed you who to call if you have questions about your mental health or substance use services.	78.0	12.2	2.9	1.0	5.5
14. You were given information on how to get additional community resources when you asked for information (example: transportation, childcare, employment training).	76.2	11.6	2.9	1.1	7.3
15. Your provider discussed other services that may benefit you in your treatment/recovery (Example: treatment related services such as peer support, outpatient, medication, etc.).	82.9	9.1	2.8	0.7	1.8
16. You have the option to change your service provider should you choose to.	81.7	4.9	3.0	0.9	6.7
17. You were informed about your rights and responsibilities regarding the treatment you received.	96.3	1.8	3.0	0.4	0.6
18. You feel comfortable in asking questions regarding your treatment.	97.6	1.2	3.0	0.2	0.0
19. Your service provider spends adequate time with you.	90.9	4.3	2.9	0.5	0.6
20. Your provider asks your permission before sharing your personal information.	93.9	1.2	3.0	0.4	0.6
21. Program staff respects your ethnic, cultural, and religious background in your recovery/treatment.	99.4	0.0	3.0	0.1	0.0
22. You trust your service provider.	95.7	2.4	3.0	0.4	0.6
23. You feel safe at this facility.	93.9	1.8	2.9	0.4	0.6
24. Your service provider offered you the opportunity to involve family, significant others, or friends into your treatment process.	87.8	6.1	2.8	0.6	0.6
25. You are included in the development of your treatment/recovery plan and goals for recovery.	95.7	2.4	2.9	0.3	0.0
26. You are an important part of the treatment process.	95.1	1.8	3.0	0.4	0.6
27. Your service provider explained the advantages of therapy or treatment.	90.2	5.5	2.9	0.5	0.6
28. Your service provider explained the limitations of therapy or treatment.	88.4	6.7	2.8	0.6	0.6
29. Overall, you are satisfied with the services received/are receiving.	92.7	4.3	2.9	0.4	0.0

Table 2 – Total Satisfaction – Services Questions – Adult Respondents

N=128	Agree or Strongly Agree	Disagree or Strongly Disagree	Mean	Std. Deviation	Reported Does Not Apply
13. Your provider informed you who to call if you have questions about your mental health or substance use services.	75.0	12.5	2.9	1.1	7.0
14. You were given information on how to get additional community resources when you asked for information (example: transportation, childcare, employment training).	73.4	12.5	3.0	1.2	8.6
15. Your provider discussed other services that may benefit you in your treatment/recovery (Example: treatment related services such as peer support, outpatient, medication, etc.).	84.4	8.6	2.9	0.8	2.3
16. You have the option to change your service provider should you choose to.	85.2	4.7	2.9	0.7	3.1
17. You were informed about your rights and responsibilities regarding the treatment you received.	95.3	2.3	3.0	0.4	0.8
18. You feel comfortable in asking questions regarding your treatment.	96.9	1.6	3.0	0.3	0.0
19. Your service provider spends adequate time with you.	90.6	5.5	2.9	0.5	0.0
20. Your provider asks your permission before sharing your personal information.	94.5	0.0	3.0	0.3	0.8
21. Program staff respects your ethnic, cultural, and religious background in your recovery/treatment.	99.2	0.0	3.0	0.1	0.0
22. You trust your service provider.	96.9	1.6	3.0	0.3	0.0
23. You feel safe at this facility.	98.4	0.8	3.0	0.2	0.0
24. Your service provider offered you the opportunity to involve family, significant others, or friends into your treatment process.	89.1	5.5	2.9	0.6	0.8
25. You are included in the development of your treatment/recovery plan and goals for recovery.	96.9	1.6	3.0	0.3	0.0
26. You are an important part of the treatment process.	96.9	1.6	2.9	0.4	0.8
27. Your service provider explained the advantages of therapy or treatment.	90.6	4.7	2.9	0.5	0.8
28. Your service provider explained the limitations of therapy or treatment.	89.1	5.5	2.9	0.6	0.8
29. Overall, you are satisfied with the services received/are receiving.	96.1	2.3	2.9	0.3	0.0

Table 3 – Total Satisfaction – Services Questions – Child/Adolescent Respondents

N=36	Agree or Strongly Agree	Disagree or Strongly Disagree	Mean	Std. Deviation	Reported Does Not Apply
13. Your provider informed you who to call if you have questions about your mental health or substance use services.	88.9	11.1	2.8	0.6	0.0
14. You were given information on how to get additional community resources when you asked for information (example: transportation, childcare, employment training).	86.1	8.3	2.9	0.8	2.8
15. Your provider discussed other services that may benefit you in your treatment/recovery (Example: treatment related services such as peer support, outpatient, medication, etc.).	77.8	11.1	2.7	0.7	0.0
16. You have the option to change your service provider should you choose to.	69.4	5.6	3.4	1.4	19.4
17. You were informed about your rights and responsibilities regarding the treatment you received.	100.0	0.0	3.0	0.0	0.0
18. You feel comfortable in asking questions regarding your treatment.	100.0	0.0	3.0	0.0	0.0
19. Your service provider spends adequate time with you.	91.7	0.0	3.0	0.6	2.8
20. Your provider asks your permission before sharing your personal information.	91.7	5.6	2.9	0.5	0.0
21. Program staff respects your ethnic, cultural, and religious background in your recovery/treatment.	100.0	0.0	3.0	0.0	0.0
22. You trust your service provider.	91.7	5.6	3.0	0.7	2.8
23. You feel safe at this facility.	77.8	5.6	2.8	0.8	2.8
24. Your service provider offered you the opportunity to involve family, significant others, or friends into your treatment process.	83.3	8.3	2.8	0.6	0.0
25. You are included in the development of your treatment/recovery plan and goals for recovery.	91.7	5.6	2.9	0.5	0.0
26. You are an important part of the treatment process.	88.9	2.8	2.9	0.4	0.0
27. Your service provider explained the advantages of therapy or treatment.	88.9	8.3	2.8	0.6	0.0
28. Your service provider explained the limitations of therapy or treatment.	86.1	11.1	2.8	0.6	0.0
29. Overall, you are satisfied with the services received/are receiving.	80.6	11.1	2.7	0.7	0.0

Outcomes of Services

The standard survey asks respondents 11 questions about how much they feel their life has improved based on receiving services.

Respondents describe their lives as being better as a result of their services in the majority of cases. In total, 72.0% to 87.2% of individuals' responses reflect services have improved their lives in each outcome area. Additionally, 11.0% to 20.7% of responses reflect that no change has resulted from involvement in services. Finally, 0.6% to 5.5% of responses reflect things are worse as a result of services.

**Participating with school or work activities Q38. A high number of respondents reported that this question did not apply to them. With these cases removed, 80.0% reported that participating with school or work is better or much better, 17.5% reported no change, and 2.5% reported this as worse or much worse. This is a more accurate representation of the data.*

**Being involved in community activities Q37. A high number of respondents reported that this question did not apply to them. With these cases removed, 68.6% reported that being involved in community events is better or much better, 27.7% reported no change, and 3.6% reported this as worse or much worse. This is a more accurate representation of the data.*

**Summary responses from the Total group of respondents (N=164) are presented in Table 4.
Summary responses from the Adult group of respondents (N=128) are presented in Table 5.
Summary responses from the Child/Adolescent group of respondents (N=36) are presented in Table 6.**

Table 4 – Total Satisfaction – Outcomes of Services Questions – All Respondents

Total N=164	Better or Much Better	About the Same	Worse or Much Worse	Mean	Std. Deviation	Reported Does Not Apply
30. Managing daily problems.	85.4	11.6	2.4	2.9	0.5	0.6
31. Feeling in control of your life.	79.3	16.5	3.7	2.8	0.6	0.6
32. Coping with personal crisis.	72.0	19.5	5.5	2.8	0.8	3.0
33. How you feel about yourself.	82.9	14.0	1.8	2.9	0.6	1.2
34. Feeling good (hopeful) about the future.	83.5	12.8	2.4	2.9	0.6	1.2
35. Enjoying your free time.	87.2	11.0	0.6	2.9	0.5	1.2
36. Strengthening your social support network.	75.6	20.7	3.0	2.8	0.6	0.6
37. Being involved in community activities.	57.3	23.2	3.0	3.2	1.3	16.5
38. Participating with school or work activities.	58.5	12.8	1.8	3.6	1.5	26.8
39. Interacting with people in social situations.	79.9	16.5	3.0	2.8	0.5	0.6
40. Coping with the specific problems or issues that led you to seek services.	84.8	12.2	1.8	2.9	0.5	1.2

Table 5 – Total Satisfaction – Outcomes of Services Questions – Adult Respondents

Total N=128	Better or Much Better	About the Same	Worse or Much Worse	Mean	Std. Deviation	Reported Does Not Apply
30. Managing daily problems.	89.1	10.2	0.0	2.9	0.4	0.8
31. Feeling in control of your life.	81.3	14.1	3.9	2.8	0.6	0.8
32. Coping with personal crisis.	76.6	16.4	3.9	2.9	0.8	3.1
33. How you feel about yourself.	87.5	10.2	1.6	2.9	0.5	0.8
34. Feeling good (hopeful) about the future.	89.1	7.8	2.3	2.9	0.5	0.8
35. Enjoying your free time.	86.7	10.9	0.8	2.9	0.5	1.6
36. Strengthening your social support network.	83.6	13.3	2.3	2.8	0.5	0.8
37. Being involved in community activities.	59.4	19.5	2.3	3.3	1.4	18.8
38. Participating with school or work activities.	57.8	7.8	0.8	3.9	1.5	33.6
39. Interacting with people in social situations.	86.7	10.9	1.6	2.9	0.5	0.8
40. Coping with the specific problems or issues that led you to seek services.	89.1	7.8	1.6	2.9	0.5	1.6

Table 6 – Total Satisfaction – Outcomes of Services Questions – Child/Adolescent Respondents

Total N=36	Better or Much Better	About the Same	Worse or Much Worse	Mean	Std. Deviation	Reported Does Not Apply
30. Managing daily problems.	72.2	16.7	11.1	2.6	0.7	0.0
31. Feeling in control of your life.	72.2	25.0	2.8	2.7	0.5	0.0
32. Coping with personal crisis.	55.6	30.6	11.1	2.6	0.9	2.8
33. How you feel about yourself.	66.7	27.8	2.8	2.8	0.8	2.8
34. Feeling good (hopeful) about the future.	63.9	30.6	2.8	2.7	0.8	2.8
35. Enjoying your free time.	88.9	11.1	0.0	2.9	0.3	0.0
36. Strengthening your social support network.	47.2	47.2	5.6	2.4	0.6	0.0
37. Being involved in community activities.	50.0	36.1	5.6	2.8	1.1	8.3
38. Participating with school or work activities.	61.1	30.6	5.6	2.7	0.8	2.8
39. Interacting with people in social situations.	55.6	36.1	8.3	2.5	0.7	0.0
40. Coping with the specific problems or issues that led you to seek services.	69.4	27.8	2.8	2.7	0.5	0.0

Satisfaction with the Managed Care Organization

There are nine survey questions that assess member satisfaction with the MCO, PerformCare.

- 36.0% of respondents (59 of the 164) reported that they had received a copy of the PerformCare member handbook, 52.4% (86) reported that they had not received a copy of the member handbook, 11.0% (18) were not sure, and 0.6% (1) reported that this question did not apply.

	Total	Q1 Have you received a copy of the Member Handbook from PerformCare?			
		Yes	No	Not Sure	Does Not Apply
Total	164	59 36.00%	86 52.40%	18 11.00%	1 0.60%
Adult					
Cumberland	28	9 32.10%	16 57.10%	2 7.10%	1 3.60%
Dauphin	19	8 42.10%	10 52.60%	1 5.30%	0
Lancaster	77	16 20.80%	49 63.60%	12 15.60%	0
Lebanon	4	1 25.00%	3 75.00%	0	0
Perry	0	0	0	0	0
Child					
Cumberland	7	6 85.70%	1 14.30%	0	0
Dauphin	3	3 100.00%	0	0	0
Lancaster	21	12 57.10%	7 33.30%	2 9.50%	0
Lebanon	2	2 100.00%	0	0	0
Perry	3	2 66.70%	0	1 33.30%	0

- 90.2% of respondents (148 of the 164) reported that they were aware of their right to file a complaint or grievance, 6.7% (11) reported that they were not aware of their right to file a complaint or grievance, 2.4% (4) reported that they were not sure, and 0.6% (1) reported that this question did not apply.

	Total	Q2 Are you aware of your right to file a complaint or grievance?			
		Yes	No	Not Sure	Does Not Apply
Total	164	148 90.20%	11 6.70%	4 2.40%	1 0.60%
Adult					
Cumberland	28	24 85.70%	3 10.70%	0 0	1 3.60%
Dauphin	19	16 84.20%	1 5.30%	2 10.50%	0
Lancaster	77	70 90.90%	6 7.80%	1 1.30%	0
Lebanon	4	4 100.00%	0	0	0
Perry	0	0	0	0	0
Child					
Cumberland	7	7 100.00%	0	0	0
Dauphin	3	3 100.00%	0	0	0
Lancaster	21	19 90.50%	1 4.80%	1 4.80%	0
Lebanon	2	2 100.00%	0	0	0
Perry	3	3 100.00%	0	0	0

- 59.8% of respondents (98 of the 164) reported that they knew who to call to file a complaint or grievance, 34.1% (56) reported that they did not know who to call, 4.3% (7) were not sure, and 1.8% (3) reported that this question did not apply.

	Total	Q3 Do you know who to call to file a complaint or grievance?			
		Yes	No	Not Sure	Does Not Apply
Total	164	98 59.80%	56 34.10%	7 4.30%	3 1.80%
Adult					
Cumberland	28	20 71.40%	7 25.00%	0 0	1 3.60%
Dauphin	19	11 57.90%	8 42.10%	0 0	0 0
Lancaster	77	31 40.30%	40 51.90%	6 7.80%	0 0
Lebanon	4	3 75.00%	1 25.00%	0 0	0 0
Perry	0	0 0	0 0	0 0	0 0
Child					
Cumberland	7	7 100.00%	0 0	0 0	0 0
Dauphin	3	3 100.00%	0 0	0 0	0 0
Lancaster	21	18 85.70%	0 0	1 4.80%	2 9.50%
Lebanon	2	2 100.00%	0 0	0 0	0 0
Perry	3	3 100.00%	0 0	0 0	0 0

- 20.7% of respondents (34 of the 164) reported that they had called PerformCare in the last twelve months for information, 73.2% (120) reported that they had not called PerformCare within the last twelve months, 0.6% (1) were not sure, and 5.5% (9) reported this question did not apply.

	Total	Q4 In the last twelve months, did you call member services at PerformCare to get information? (example: help for counseling, treatment, or other services)			
		Yes	No	Not Sure	Does Not Apply
Total	164	34 20.70%	120 73.20%	1 0.60%	9 5.50%
Adult					
Cumberland	28	4 14.30%	19 67.90%	1 3.60%	4 14.30%
Dauphin	19	7 36.80%	11 57.90%	0 0	1 5.30%
Lancaster	77	11 14.30%	63 81.80%	0 0	3 3.90%
Lebanon	4	1 25.00%	3 75.00%	0 0	0 0
Perry	0	0 0	0 0	0 0	0 0
Child					
Cumberland	7	0 0	6 85.70%	0 0	1 14.30%
Dauphin	3	1 33.30%	2 66.70%	0 0	0 0
Lancaster	21	8 38.10%	13 61.90%	0 0	0 0
Lebanon	2	2 100.00%	0 0	0 0	0 0
Perry	3	0 0	3 100.00%	0 0	0 0

- 94.1% of those that requested information from PerformCare (32 of the 34) reported that they were able to obtain information on treatment and/or services from PerformCare without unnecessary delays, and 5.9% (2) reported that they were not able to obtain information without unnecessary delays.

	Total	Q4A Were you able to obtain information on treatment and/or services from PerformCare without unnecessary delays?			
		Yes	No	Not Sure	Does Not Apply
Total	34	32 94.10%	2 5.90%	0 0	0 0
Adult					
Cumberland	4	4 100.00%	0 0	0 0	0 0
Dauphin	7	7 100.00%	0 0	0 0	0 0
Lancaster	11	11 100.00%	0 0	0 0	0 0
Lebanon	1	1 100.00%	0 0	0 0	0 0
Perry	0	0 0	0 0	0 0	0 0
Child					
Cumberland	0	0 0	0 0	0 0	0 0
Dauphin	1	1 100.00%	0 0	0 0	0 0
Lancaster	8	6 75.00%	2 25.00%	0 0	0 0
Lebanon	2	2 100.00%	0 0	0 0	0 0
Perry	0	0 0	0 0	0 0	0 0

**Respondents who answered NO for question 4 were not asked question 4a.*

- 49.4% of respondents (81 of 164) reported that they were given a choice of at least 2 providers regarding the type of service they were seeking, 32.3% (53) reported that they were not given a choice, 8.5% (14) were not sure, and 9.8% (16) reported that this question did not apply.

	Total	Q5 Were you given a choice of at least two (2) Providers from PerformCare regarding the type of service you were seeking?			
		Yes	No	Not Sure	Does Not Apply
Total	164	81 49.40%	53 32.30%	14 8.50%	16 9.80%
Adult					
Cumberland	28	14 50.00%	6 21.40%	2 7.10%	6 21.40%
Dauphin	19	13 68.40%	5 26.30%	0	1 5.30%
Lancaster	77	32 41.60%	35 45.50%	9 11.70%	1 1.30%
Lebanon	4	0 0	3 75.00%	0	1 25.00%
Perry	0	0 0	0 0	0 0	0 0
Child					
Cumberland	7	4 57.10%	0 0	1 14.30%	2 28.60%
Dauphin	3	3 100.00%	0 0	0 0	0 0
Lancaster	21	14 66.70%	3 14.30%	2 9.50%	2 9.50%
Lebanon	2	0 0	0 0	0 0	2 100.00%
Perry	3	1 33.30%	1 33.30%	0 0	1 33.30%

- 81.7% of respondents (134 of 164) reported that they were informed of the time approved for their services, 12.2% of respondents (20) were not informed of the time approved for services, 4.3% (7) were not sure, and 1.8% (3) reported that this question did not apply.

	Total	Q6 Were you informed of the time approved for your services? (Example: IBHS hours, treatment sessions)			
		Yes	No	Not Sure	Does Not Apply
Total	164	134 81.70%	20 12.20%	7 4.30%	3 1.80%
Adult					
Cumberland	28	20 71.40%	6 21.40%	0 0	2 7.10%
Dauphin	19	16 84.20%	2 10.50%	1 5.30%	0
Lancaster	77	61 79.20%	11 14.30%	5 6.50%	0
Lebanon	4	3 75.00%	1 25.00%	0 0	0
Perry	0	0 0	0 0	0 0	0
Child					
Cumberland	7	6 85.70%	0 0	0 0	1 14.30%
Dauphin	3	3 100.00%	0 0	0 0	0
Lancaster	21	21 100.00%	0 0	0 0	0
Lebanon	2	1 50.00%	0 0	1 50.00%	0
Perry	3	3 100.00%	0 0	0 0	0

- 100.0% of respondents (85 of the 85) reported when they called PerformCare staff treats them courteously and with respect.

	Total	Q7 When you call PerformCare, do staff treat you courteously and with respect?		
		Yes	No	Not Sure
Total	85	85 100.00%	0 0	0 0
Adult				
Cumberland	13	13 100.00%	0 0	0 0
Dauphin	13	13 100.00%	0 0	0 0
Lancaster	32	32 100.00%	0 0	0 0
Lebanon	2	2 100.00%	0 0	0 0
Perry	0	0 0	0 0	0 0
Child				
Cumberland	4	4 100.00%	0 0	0 0
Dauphin	2	2 100.00%	0 0	0 0
Lancaster	15	15 100.00%	0 0	0 0
Lebanon	2	2 100.00%	0 0	0 0
Perry	2	2 100.00%	0 0	0 0

**As there was such a high proportion of respondents in the does not apply category, the percentages are reported for those respondents who felt the question was applicable. This is a more accurate representation of the data.*

- 96.2% of respondents (128 of 133) report overall they are satisfied with their interactions with PerformCare, 3.0% (4) report overall they are not satisfied with their interactions, 0.8% (1) were not sure.

	Total	Q8 Overall, are you satisfied with the interactions you have had with PerformCare?		
		Yes	No	Not Sure
Total	133	128 96.20%	4 3.00%	1 0.80%
Adult				
Cumberland	16	16 100.00%	0 0	0 0
Dauphin	15	13 86.70%	1 6.70%	1 6.70%
Lancaster	67	66 98.50%	1 1.50%	0 0
Lebanon	3	3 100.00%	0 0	0 0
Perry	0	0 0	0 0	0 0
Child				
Cumberland	4	4 100.00%	0 0	0 0
Dauphin	3	3 100.00%	0 0	0 0
Lancaster	21	19 90.50%	2 9.50%	0 0
Lebanon	2	2 100.00%	0 0	0 0
Perry	2	2 100.00%	0 0	0 0

**As there was such a high proportion of respondents in the does not apply category, the percentages are reported for those respondents who felt the question was applicable. This is a more accurate representation of the data.*

PerformCare Comments:

Q1 Have you received a copy of the Member Handbook from PerformCare?

- It was sent to my home address.
- I have not been getting my mail lately.

Q2 Are you aware of your right to file a complaint or grievance?

- I am told that because of my son's age I do not have the right to file a complaint.
- Because he is over 14, I have to have his permission to file a complaint.

Q3 Do you know who to call to file a complaint or grievance?

- No comments.

Q4 In the last twelve months, did you call member services at PerformCare to get information?

- They have been in touch with me.
- They call me.
- Have a team meeting every quarter.

Q4A Were you able to obtain information on treatment and/or services from PerformCare without unnecessary delays?

- When I asked why I was not allowed to make decisions, the PerformCare case worker took 3 weeks to get back to me.
- I was satisfied.
- A partial response. PerformCare case worker gave me improper advice and kind of flip flopped. I had to call her out.

Q5 Were you given a choice of at least two (2) Providers from PerformCare regarding the type of service you were seeking?

- This was my choice.
- Only place that would accept him.
- Nothing else out there.
- Asked to come to Blueprints.

Q6 Were you informed of the time approved for your services? (Example: IBHS hours, treatment sessions).

- I would really like to get an extension past 21 days.

Q7 When you call PerformCare do staff treat you courteously and with respect.

- Very much.
- They called me.
- They call me.
- Never called. (5)

Q8 Overall, are you satisfied with the interactions you have had with PerformCare?

- Treatment plan meetings.
- They call here on speaker phone.
- They are pushing to have my son discharged sooner than I think he should be.
- Monthly meeting.
- At the treatment plan meeting.
- 100%

Additional PerformCare Comments

- **They take care of me as needed.**
- **I am very pleased with PerformCare. I appreciate that they have provided funding for me to have gone through so much treatment.**